

CFS Sure-Lok Electronic Mount

Cisco Fishing Systems, Ltd.

1791 East 38th St

Cleveland, Ohio 44114

www.cisconfishingsystemsLtd.com

Thank you for your purchase of the CFS Cisco Sure-Lok Mounting System. This universal mount securely holds most chartplotters, GPS, fishfinders, VHF radios and allows you to reposition the unit for viewing from any angle. Included in this kit there are three separate ways to mount your unit. Please follow the simple installation instructions below to ensure proper use of your product.



Intended Use:

This product is designed for use of marine electronic devices from major manufacturers. Cisco Fishing Systems, Ltd. is not liable for any loss of product resulting from accidents, misuse, alteration, or lack of reasonable care.

Installation Instructions:

Mounting plates come with a set of two interior countersunk holes and a set of exterior holes. The plate with exterior holes without threading for screws is to be described as the Thru Hole Plate and the plate with the two exterior holes with threading for the thumbscrews is to be described as the Threaded Hole Plate.

A. Thumbscrew Mounting (unit shipped prepared for this installation method)

The thumbscrew mounting system includes two mounting plates and two thumbscrews. Loosening of the thumbscrews will allow you to remove and store your equipment.

Step 1: Place the Threaded Hole Plate with the two outside threaded holes onto the desired location with the countersunk holes facing up (choose a location that allows sufficient clearance for the completed unit to move freely). Using two screws (not included) fasten the mounting plate to the desired location into the countersunk holes as shown. (Figure 1)

Step 2: Place the two thumbscrews (provided) into the holes on the Thru Mounting Plate. Set the unit onto the Threaded Mounting Plate and attach the two plates. (Figure 1)

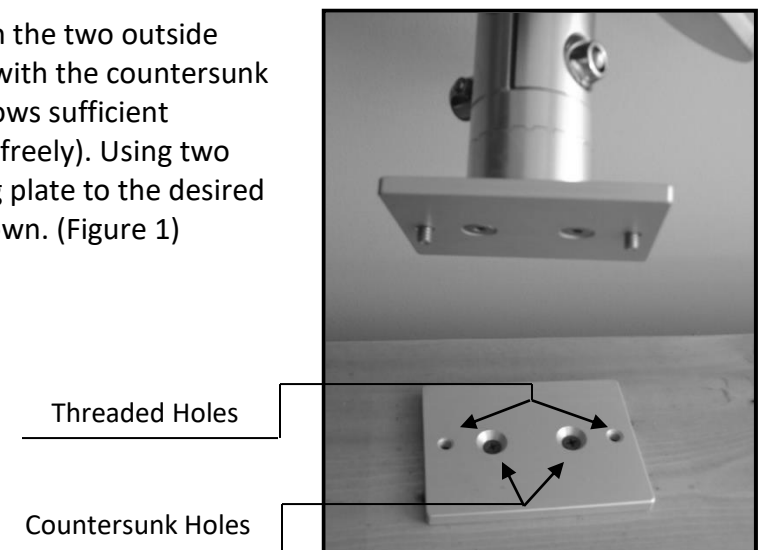


Figure 1

B. Track Mounting (track not included)

The track mounting system requires only one of the two plates provided. Loosening of the thumbscrews will allow you to remove and store your equipment.

Step 1: Remove the Thru Mounting Plate attached to the bottom of the Sure-Lok Electronic Unit.

Step 2: Attach the Threaded Hole Plate to the Sure-Lok Electronic Mounting Unit using the same screws that were removed.

Step 3: Attach the thumbscrews through the threaded holes.

Step 4: Slide the unit into the track system and tighten the thumbscrews firmly against the track to ensure the unit is securely fastened.

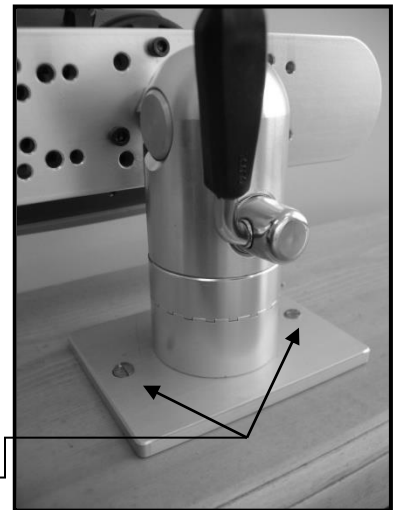


C. Permanent Mounting

The permanent mounting system requires only one of the two plates provided.

Step 1: Using two screws (not included) fasten the Thru Mounting Plate to the desired location (choose a location that allows sufficient clearance for the completed unit to move freely).

Thru Holes



Operating Instructions:

Adjusting the Top Plate: The positive locking head of the Sure-Lok Mounting System will adjust to any angle from zero up to 135 degrees by actuating the padded lever. Simply release the lever and move the top plate to the desired angle and close the lever to keep the device from moving. The rod holder simply indexes in a radial movement every 18 degrees by lifting and turning the spring-loaded mechanism.

Customer Support: If you have any questions please contact us at 216-881-4559.